

Just a reminder that seed cleaning evenings are back!

The first will be held next **Tuesday 30th April** at 7 - 9pm at the nursery.

Please join us to help sort seeds and prepare them for storage for future sowing, a cuppa and cake will be provided. Please reply to let us know if you are planning to attend so we have an idea of numbers.

Butterfly attracting plants – Dr Ross Field

Thanks again to everyone who attended the AGM in March. Below is a copy of the list of butterfly attracting plants discussed by Dr Ross Field in his talk.

Key plants to have in your butterfly garden

1. *Food plants (host plants) upon which the butterflies breed*
- ie food for their caterpillars
2. *Nectar plants*
- both native and introduced
3. *Perching plants*

Food Plants (plants on which they breed)

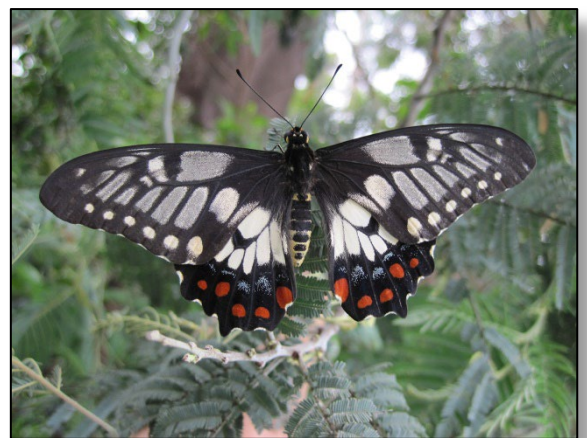
Grasses: Weeping grass (*Microlaena stipoides*),
Slender Tussock grass (*Poa tenera*),
Wire Grass (*Tetrahena juncea*),
Wallaby Grass (*Austrodanthonia*),
Kangaroo Grass (*Themeda triandra*)

Sedges: Red-fruited Saw-sedge (*Gahnia sieberiana*),
Thatch Saw-sedge (*Gahnia radula*),
Spiny-headed Mat-rush (*Lomandra longifolia*), [also *L. filiformis*]

Trees: Wattles (*Acacia melanoxylon*, *A. mearnsii*, *A. decurrens*, *A. dealbata*),
Hazel Pomaderris (*Pomaderris aspera*),
Elderberry Panax (*Polyscias sambucifolia*),
Eucalypts hosting mistletoes

Herbs and shrubs:

Shade nettle,
Everlastings,
Swan plant (milkweed),
Sweet Bursaria (*Bursaria spinosa*)



Dingy Swallowtail *Papilio anactus* perching in *Acacia* sp.
[Photo: Ken McInnes]

If you have received this email in error or no longer wish to receive CRISP Nursery updates please send a reply email with 'unsubscribe'.

CRISP Nursery Inc
17 Greenwood Ave
Ringwood 3134
9879 3911
info@crispnursery.org.au
<http://www.crispnursery.org.au>
Wed & Friday 9.30 – 12.30
Saturday 10- 1pm (March-Nov)